

# Less favoured areas in Hungary

Bucsi Tamás

student of the Szent István University  
in Gödöllő, Hungary

# Less favoured areas in Hungary

- General aims:
  - The development of the production structure suitable for the arable fundamentals, forming an environment-conscious farming and a suitable land-using form
  - To protect the landscape on the countryside
  - The improvement of the employment and the income acquisition possibilities in the countryside
  - Forming a new, alternative and to the environmentfriendly way
- Specific aims:
  - To assure the agricultural-using, hereby contributing to preserve fit-for-life countryside societies
  - To operate and promote the environmental safe farming systems
- Operative aims:
  - Promote the farmers in the LFA who attend the Good Farm Practise to sustaine the Agricultural activities

# Legal regulations

## 1257/1999

### 19. article

The LFA in which there is a high risk to abolish the utilization of land and where is needful to save the natural environment.

These areas have the following characteristics:

- The soil has low fertility
- Low production
- Decreasing population where agriculture is the main activity

### 20. article

To the LFA belong other, by special disadvantages involved regions, in which some agricultural activities have to be done , in order to protect or improve the environment, to save the natural environment or to increase the regions tourism potential

## Less favoured areas in Hungary

- Subsidies altogether on 883.558 ha  
10 % of the total cultivated area
- On the basis of the 20th article  
7,77 % of the total cultivated area  
(488.156 ha)
- According to the 19th article 6,3%  
of the total cultivated land  
( 395.402 ha)

### **According to the 19th article**

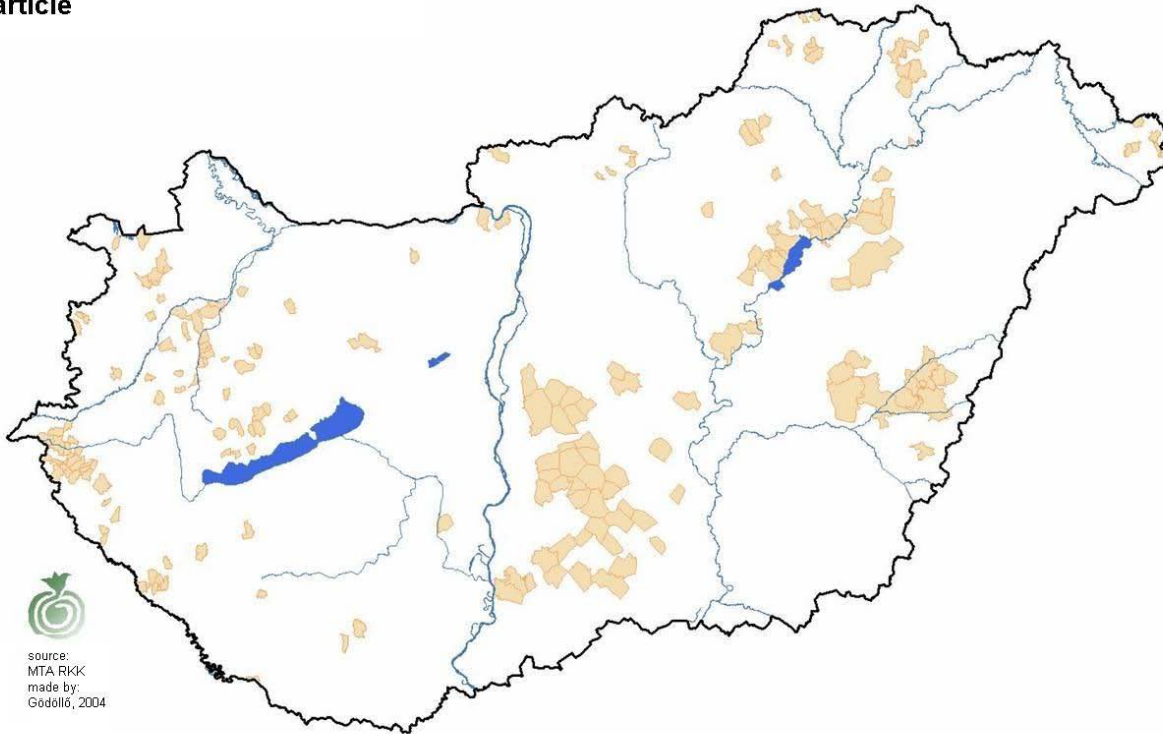
- The productivity value of the countries soils lag behind the country average  
( namely it doesn't reach the 80% of the average)
- The gross productivity value, or gross farming income didn't reach the 80% of the country average
- The population density is under the 50% of the country average and the rate of the agricultural employment exceeds 8,25%

# Less favoured areas in Hungary

## According to the 19th article

( 395.402 ha )

The selected areas by the 19th article



source:  
MTA RIKK  
made by:  
Godollo, 2004

### According to the 20th article

#### *Special disadvantages regions:*

- *In case of circumstances continue the farming*
- *To preserve the countryside, increase touristic potential*
- *To saving and improving the environment*

## According to the 20th article

- I. *The increased acidity level of the soil*
- II. *The extreme salinity of the soils*
- III. *Extreme water-management circumstances*
- IV. *Extreme physical characteristics of soils*



### According to the 20th article

#### *I. The increased acidity level of the soil*

- If the degree of the soil (pH) exceeds the value of 4,5
- It is 650.000 ha in Hungary

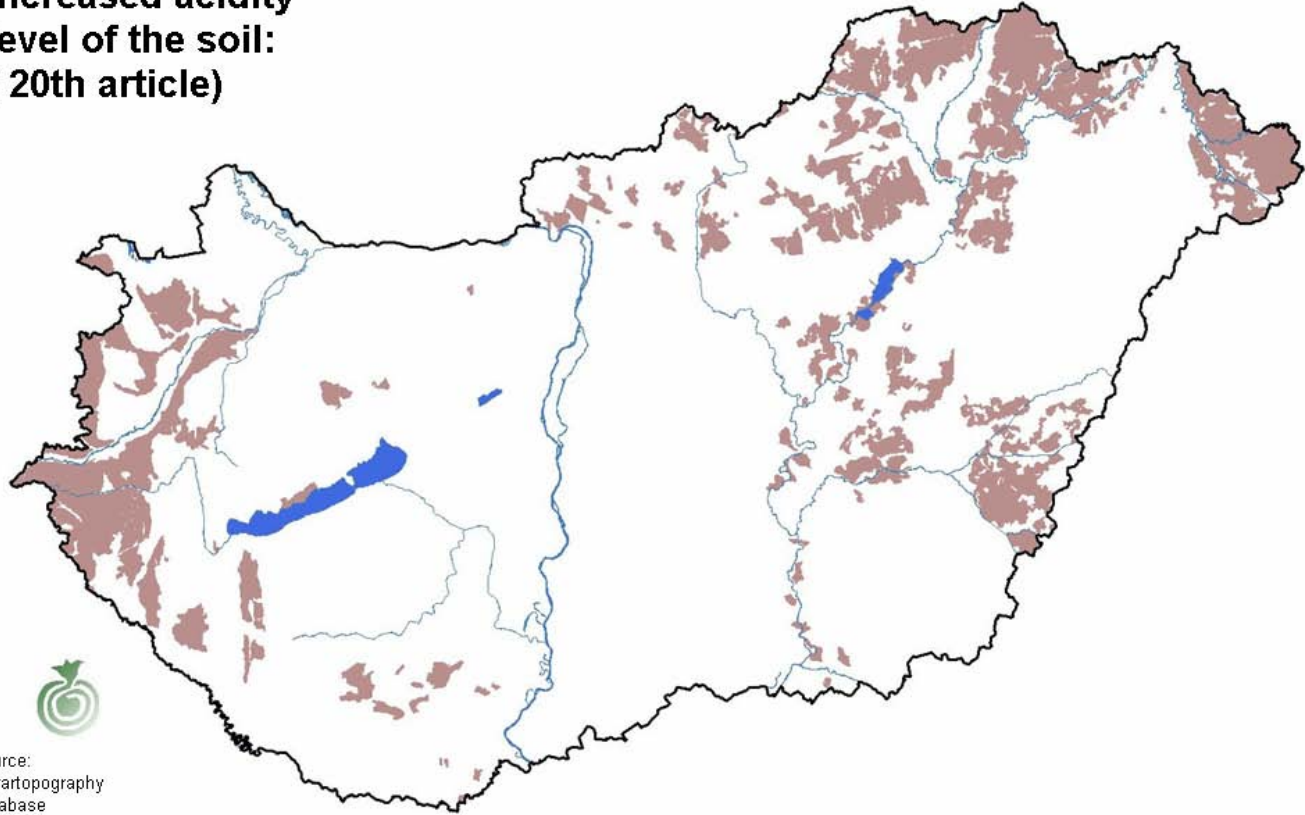
#### Reasons:

- Inefficient fertilizing
- Frequent acid-rain
- Acid industrial by-products

# Less favoured areas in Hungary

## According to the 20th article

**Increased acidity  
level of the soil:  
( 20th article)**



source:  
Agrartopography  
database  
MTA-TAKI  
made by:  
KTI KHT Gödöllő, 2004

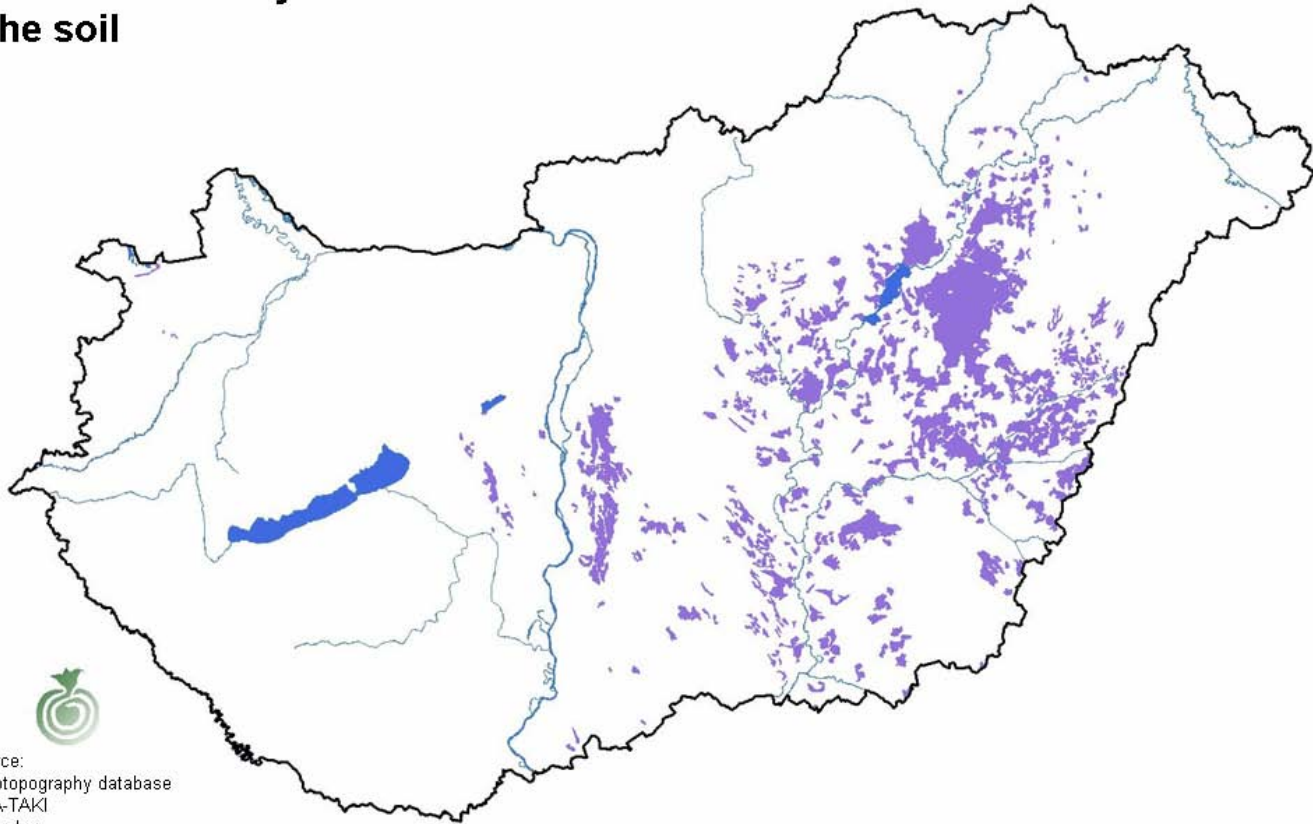
### According to the 20th article

#### II. *The extreme salinity of the soils*

- If the land's salt content is higher than 0,15%
- Szolontschak, szolonyec soils
- In Hungary 340.000 ha
- Not suitable drainage
- Changing of the „cultivation branch”

## According to the 20th article

**"Extrem" salinity of  
the soil**



source:  
Agrotopography database  
MTA-TAKI  
made by:  
KTI Kht.  
Gödöllő, 2004

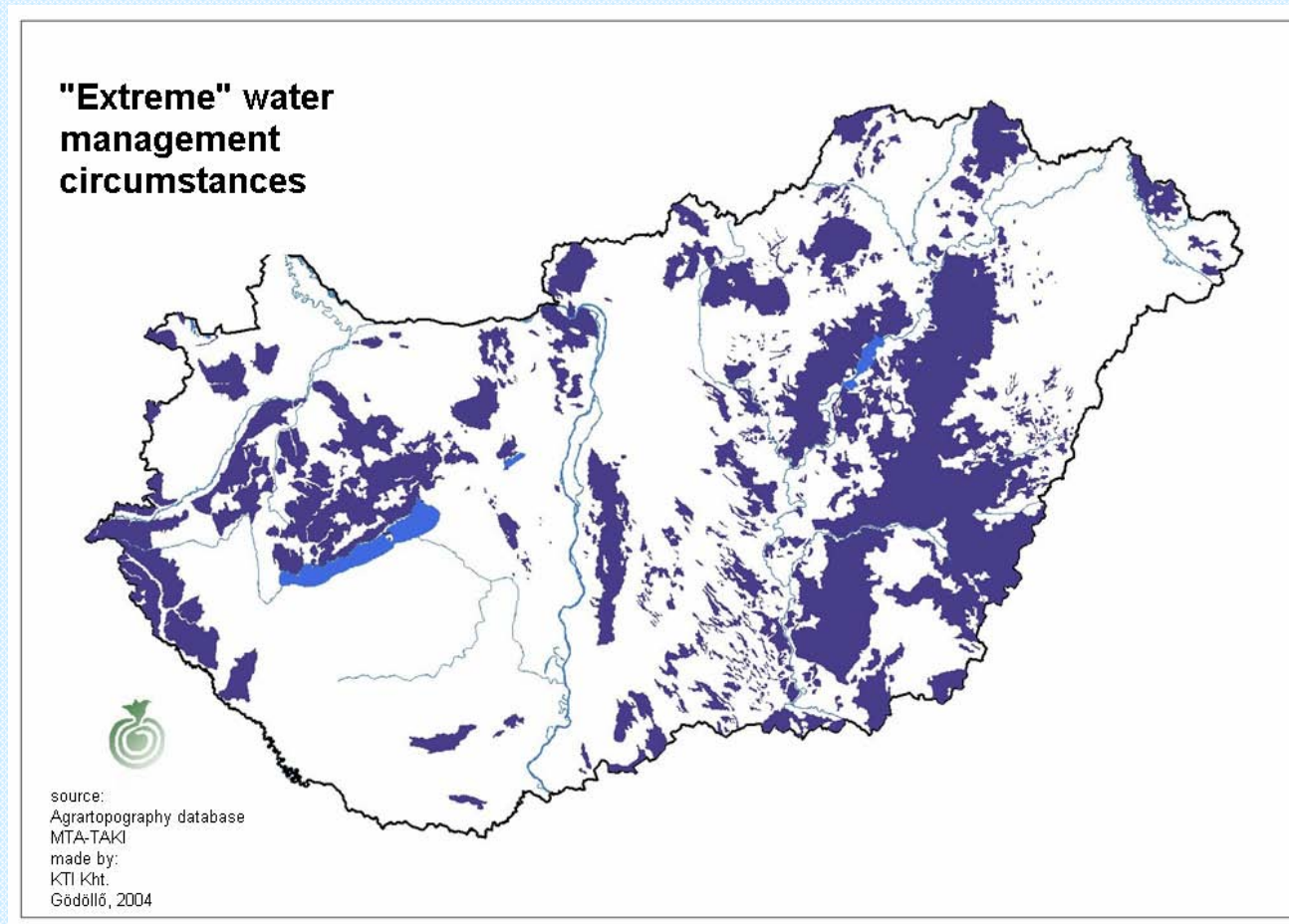
## According to the 20th article

### III. *Extreme water-management circumstances*

- Soils with bad drainage (permeable to water) system and strong water resistant grounds mean an important disadvantage to the cultivation of plants

# Less favoured areas in Hungary

## According to the 20th article



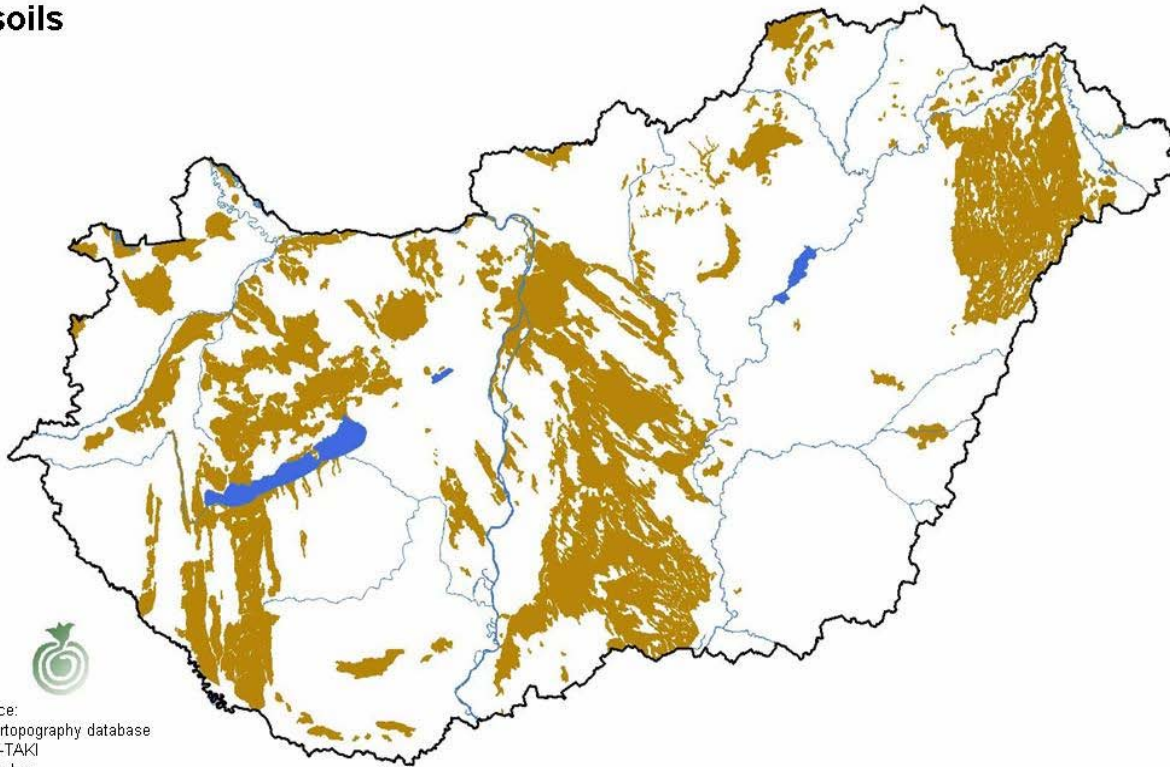
## According to the 20th article

### *IV. Extreme physical characteristics of soils*

- heavy clay and light sandy soils have a big impact to the profitability and yield of the crops.

## According to the 20th article

**"Extreme" physical characteristics of soils**



source:  
Agrartopography database  
MTA-TAKI  
made by:  
KTI Kht.  
Gödöllő, 2004

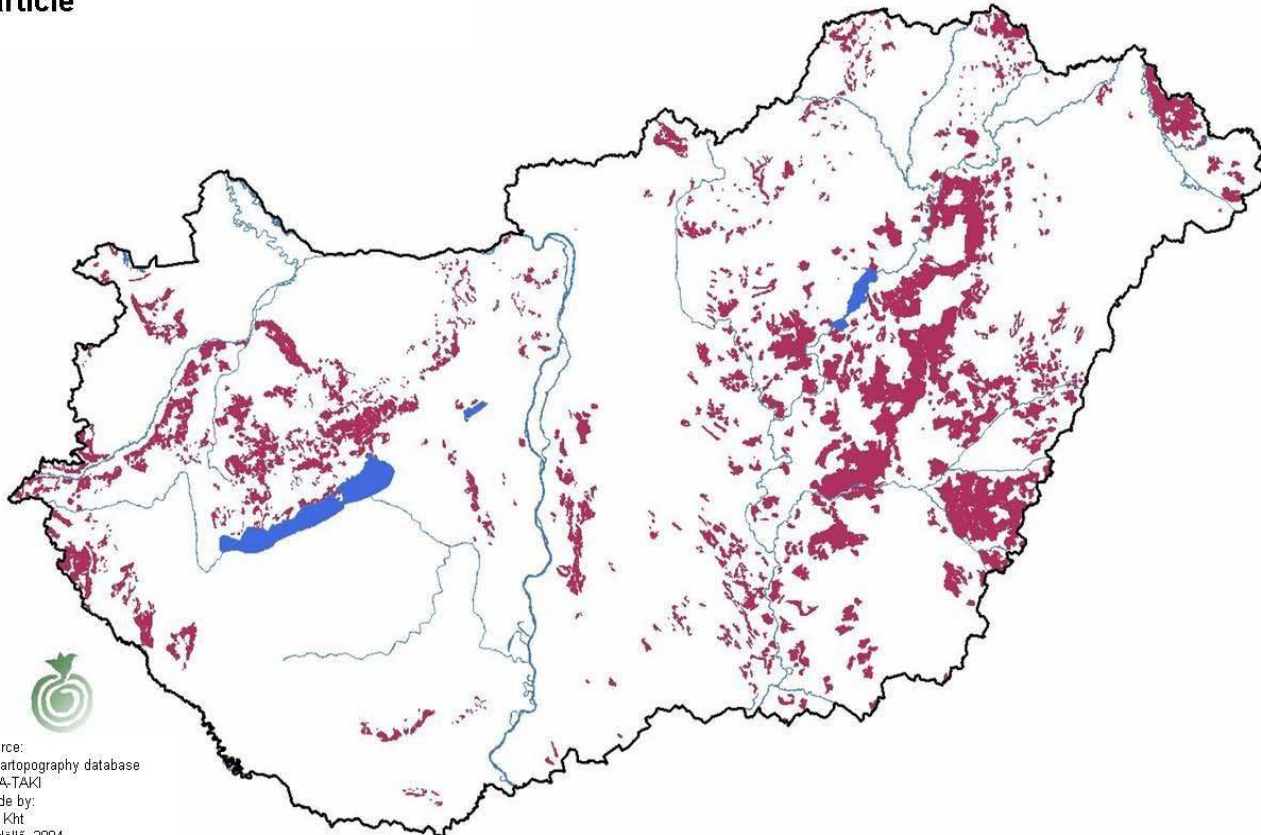


## Less favoured areas in Hungary

# According to the 20th article:

## ( 488.156 ha )

The selected areas by the 20th article



source:  
Agrartopography database  
MTA-TAKI  
made by:  
KTI Kht  
Gödöllő, 2004

## Method of the selection

### According to the 19th article

- Settlement-levelled suitability  
( NUTS 5)
- Overlap of the 4 suitability criteria determined the total required area  
( 188 settlements)

## Method of the selection

### According to the 20th article

- There was used the 1:100000 Agrotopographycal map
- 2 of 4 criterions are suitable

### Degree of the financial support

- By 19. article : 83 Euro/ha/year
- By 20. article : 11 Euro/ha/year

### Circle of the recipient

- The rules of the Good Farming Practise are kept in the whole farm
- Minimal farm size: 1 ha
- The support isn't available if the following crops are grown:  
Winter and spring wheat, rice, mais, sunflower, sugar-beet, potato, industrial plants or vegetables

Thank you for your attention!