

ERASMUS Intensive Programme (IP) 2012/13

FINAL REPORT FORM FOR STUDENTS.

**„PERMACULTURE DESIGN COURSE-
ASPERN SEESTADT**

Location of the IP: Seestadt Aspern, Vienna 1220.

Host institution:

University of Natural Resources and Life Sciences

Dates of the IP: 13.09.2012 – 29.09.2012

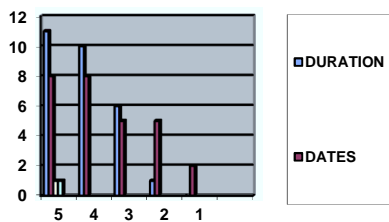
1.. STUDENTS

28 reports from HR, IS, SI, SK, PT, AT, HU and RS

2. MOTIVATION

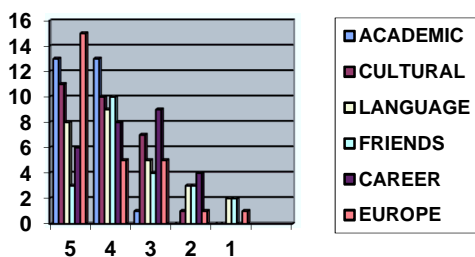
How satisfied were you with the duration and the dates of the IP ?

Scale 1-5: 1=not at all, 5 very much



Which were the factors which motivated you to participate?

Scale 1-5: 1=not at all, 5 very much



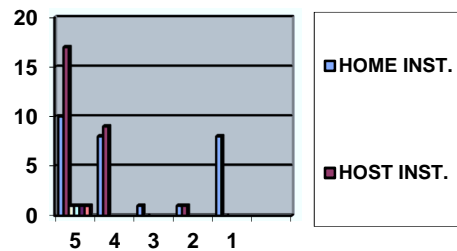
3. INFORMATION AND SUPPORT

Where did you hear about the IP ?

Home Institution 27 Host institution 3
Other students 5 Former participants 1
Internet 6 Other – professor 1

Did you receive adequate support from your home institution and from the host institution before and during the IP ?

Scale 1-5: 1=poor/negative, 5 excellent



4. ACCOMODATION AND INFRASTRUCTURE

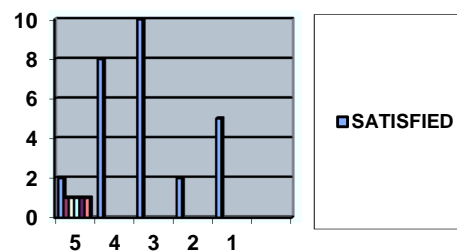
University accommodation 2

Apartment Private housing

Other: Military tents and wood house 25

Were you satisfied with your accommodation?

Scale 1-5: 1=not at all, 5 very much



5. RECOGNITION

Will you gain recognition for your IP by your home institution?

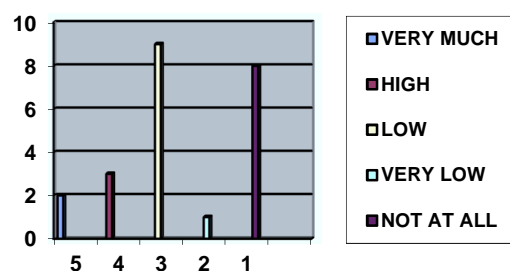
Yes 16 no 0 I don't know 8

If yes, How will it be recognised?

ECTS 14 Diploma Supplement 1 Other

Did you encounter any problems concerning recognition of your IP?

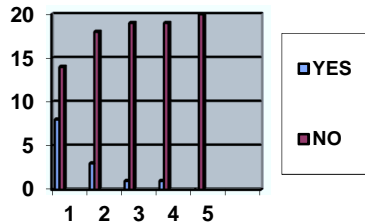
Scale: 1-5: 1=not at all, 5= very much



6. COSTS

What kind of costs did you need to contribute to?

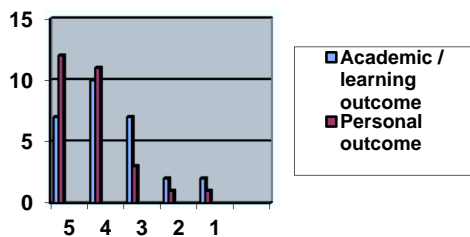
Scale: 1. Travel 2. Accommodation 3. Field Visits 4. Materials used 5. Social programme



7. YOUR PERSONAL EXPERIENCE – EVALUATION OF THE IP

Judgement of academic/learning outcomes of the IP

Judgement of personal outcomes of the IP



Scale 1-5: 1=poor / negative, 5 excellent

How satisfied were you with the academic activities and the pedagogical aspects of the IP in terms of the following aspects

Scale 1-5: 1=not at all, 5=very much

Number of hours taught

5:5, 4:15, 3:5 2:2, 1:0

Equipment used:

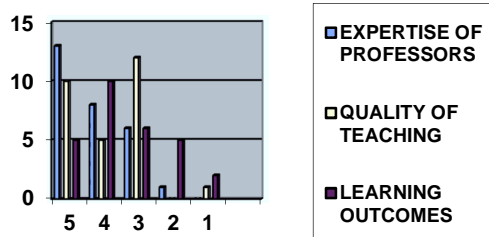
5:7, 4:9, 3:12, 2:0, 1:0

Activities beside course.

5:12, 3:6 3:8, 2:2, 1:0

The capabilities and expertise of the professors. The overall quality of teaching

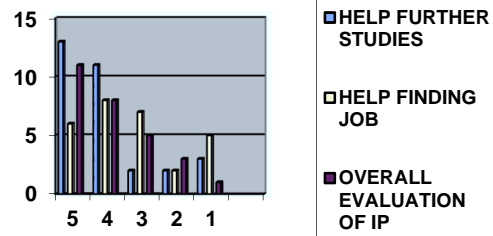
The expected learning outcomes



Do you think participation in the IP will help you in your further studies/career?

Do you think participation will help you in finding a job?

Overall evaluation of the IP



Recommendations and ideas for the IP organisers:

- + The course needs more structure and organisation
- + Label the course with enlightenment name
- + More people should organise such a course, people that can participate full time all the course
- + Better organisation of the crowd. Rule more strictly implemented. Transparency in program and tasks.
- + More support to the organiser
- + visit permaculture lab (Aspern)
- + make important information more useful by writing in a communication place of the workplace, such as daily program, new activities, tasks
- + Everyone has to rotate by the self-organised teams during the IP (kitchen, toilet, communication etc.)
- + suggestions: divide the groups into smaller ones and do practical permaculture activities